



NATIONAL
SAFETY APPAREL

GOWN-L1- Specification

Example:

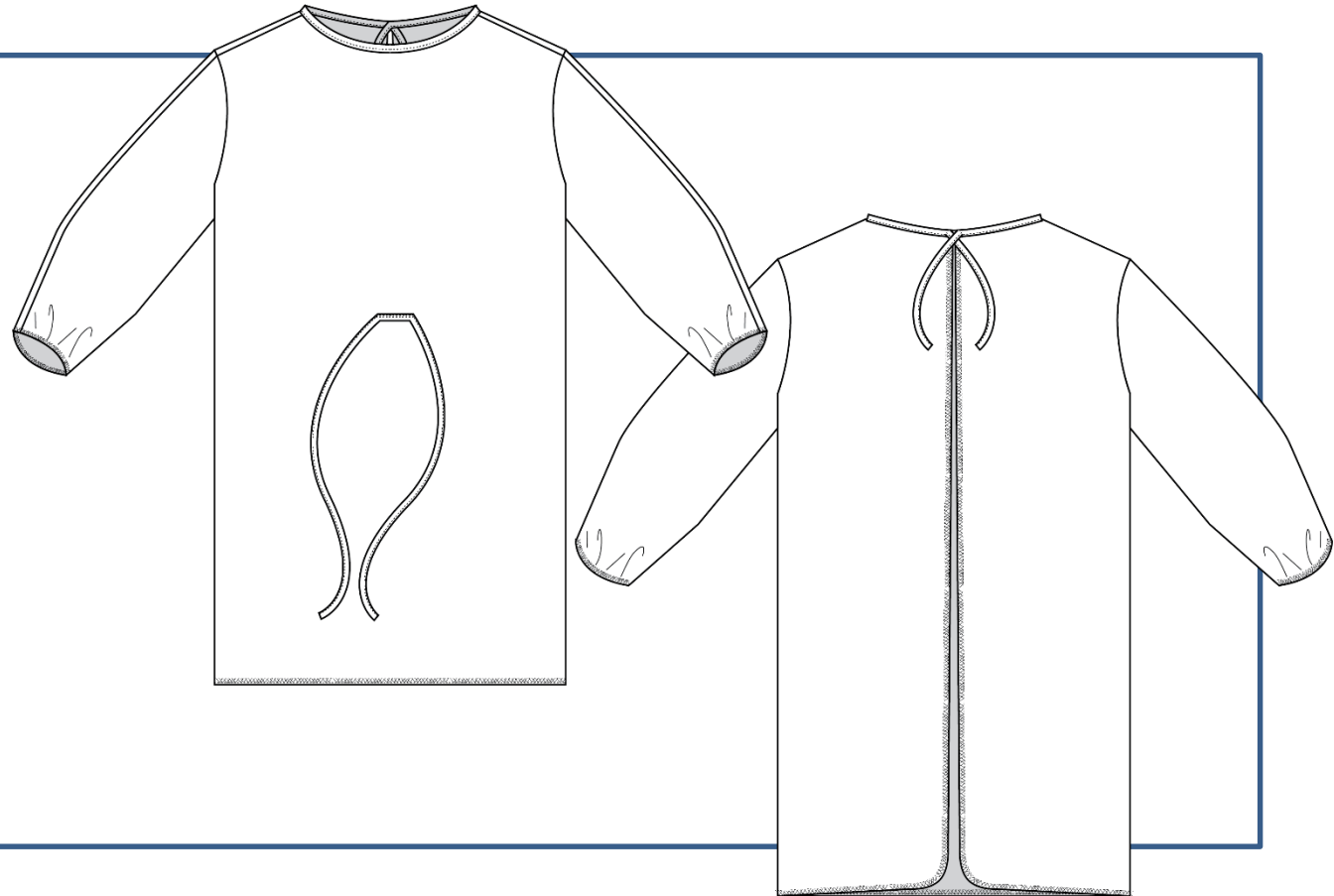
GOWN-L1-XL

Description:

Level 1 Gown, Kimono style with curved armholes, open back, ties at front waist and back neck, elastic on sleeve ends

Project:

GOWN-L1



Author	Origination Date	Last Revised By	Revision Date:
Lyana Brown	3/30/2020		

TSS Operation Sequences

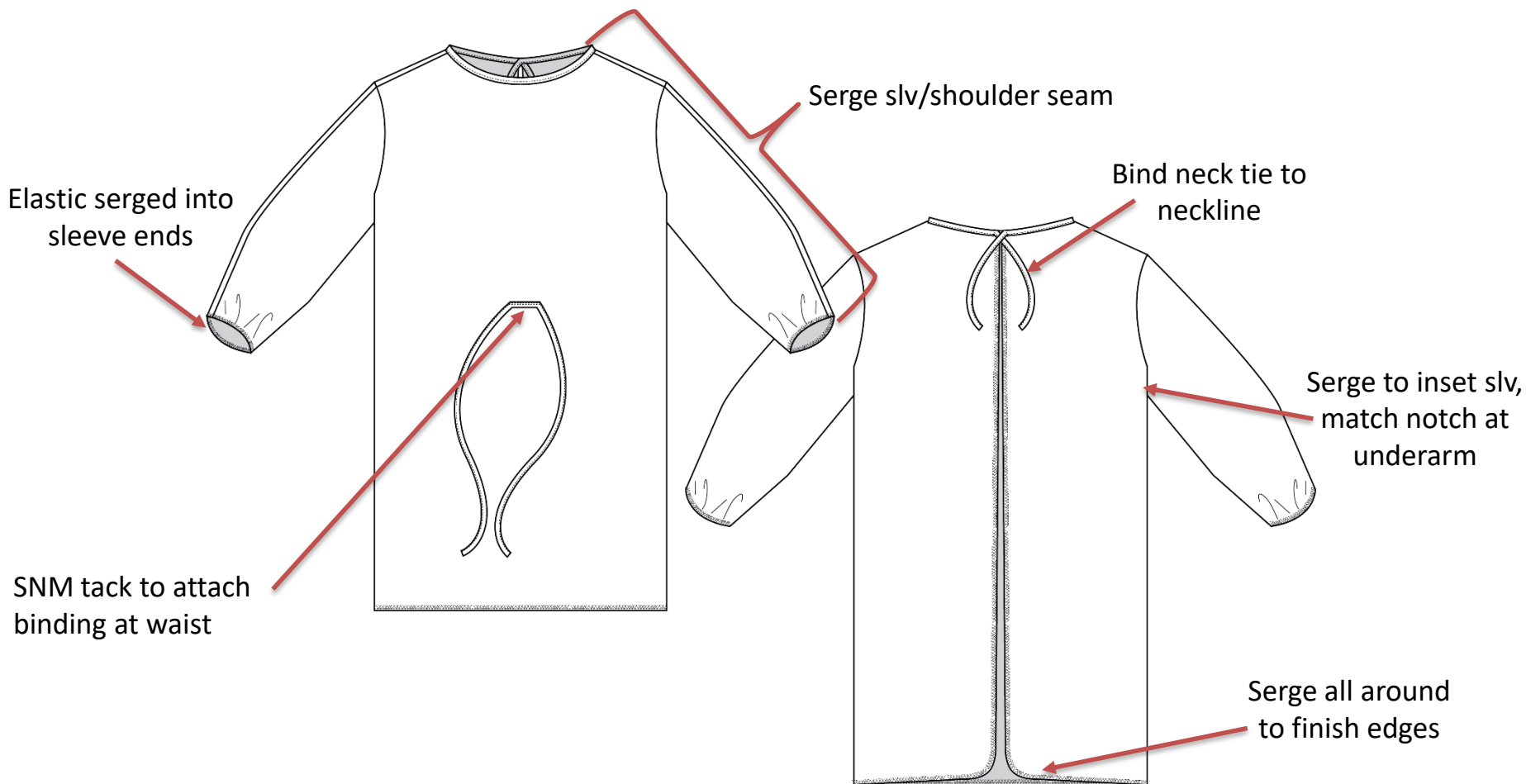
Seq #	Operation	Machine
1	Inset sleeve	Serger
2	Close top of sleeve and shoulders	Serger
3	Serge all around center back and hem	Serger
4	Bind tie and attach to neckline, bind tie for waist	SNM with folder
5	SNM tack to attach to waist	SNM
6	Attach elastic to sleeve ends	Serger with elastic
7	Inspect/Fold	Final
8		
9		
10		
11		
12		
13		

Model Name:	GOWN-L1-NSA	Image Names:			
Created by:	Lyana Brown	Date Created:	3/30/2020	Notes:	
Revised by:		Date Revised:		Revision Notes:	

FRONT

Sew 7-9 Stitches per inch

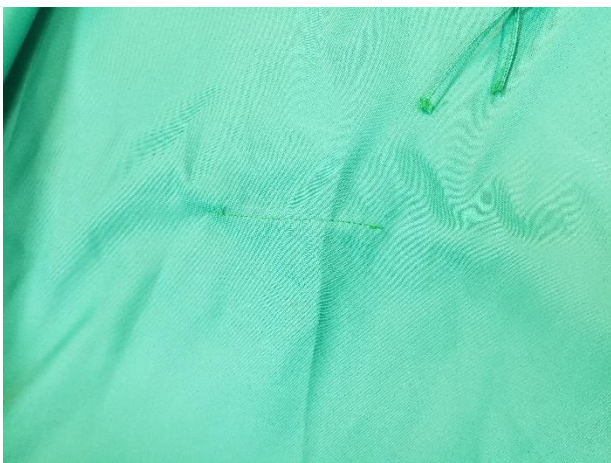
BACK



FRONT



BACK



SNM tack to attach
binding at waist



Point of Measure	LG	XL	2X	3X
Center back length from HPS	47"	47"	47"	47"
Sweep	45"	53"	61"	69"
Sleeve length from HPS	23.25"	23.25"	23.25"	23.25"

All measurements have a tolerance of +/- .5"

Revision Date	Revised By	Slide Title	Revision Description